

# Monolithic crystal filter

## MQF61.44-1500/01



### Application

- 2 pol filter
- i.f.- filter
- use in mobile and stationary transceivers

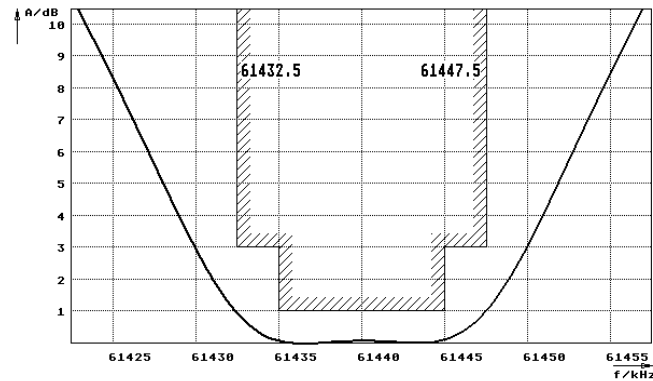
Limiting values		Unit	Value
Nominal frequency	$f_0$	MHz	61.44
Insertion loss		dB	< 3.0
Pass band at 3.0dB		kHz	$\pm > 7.5$
Ripple in pass band	$f_0 \pm 5 \text{ kHz}$	dB	< 1.0
Stop band attenuation	$f_0 \pm 100 \text{ kHz}$	dB	> 30 except spurious
Alternate attenuation	$f_0 \pm > 500 \text{ kHz}$	dB	> 40 except spurious

Terminating impedance Z			
R1  C1		Ohm/pF	3000    -0.7
R2  C2		Ohm/pF	3000    -0.7

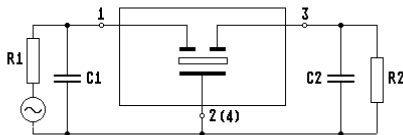
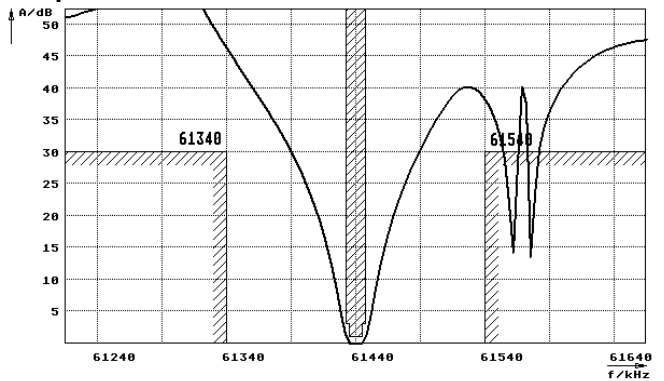
Operating temp. range		°C	-20... +70
-----------------------	--	----	------------

### Characteristics MQF61.44-1500/01

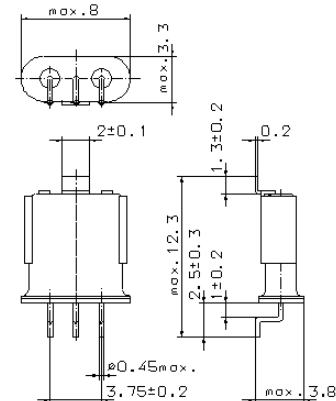
#### Pass band



#### Stop band



- Pin connections:
- 1 Input
  - 2 Ground-Input
  - 3 Output
  - 4 Ground-Output



GH9S1